

WE LOVE
OUR
WORLD



WE MUST JOIN THE
PLASTIC
RECYCLING
REVOLUTION

Million 

Senior Primary
(Gr 4 - 7)



RECYCLING

Recycling means taking something old and turning it into something new, through a mechanical process.



PLANET PALS recycle because it can save the planet from running out of energy and resources.

Why should we collect and recycle?

- It reduces litter
- It reduces pollution in the air
- It saves energy
- It looks after nature
- It leaves the planet a better place
- Used packaging has value

Colour the word in.





HOW TO RECYCLE

- 1 Make sure the product can be recycled.
- 2 Rinse your recyclable packaging in used water (fresh water is wasteful).
- 3 Allow it to drip dry.
- 4 Place the clean recyclable packaging in a carrier bag, separate from your normal waste.
- 5 Make sure to separate your different materials into different bags.

You can squash your plastic and cans to make them a lot smaller so you can fit far more in your bag!



COLOUR IN



What can we RECYCLE?



PLASTIC

In South Africa we can recycle lots of different types of plastic, but not all of them. When we recycle plastic mechanically, it can be made into new things.

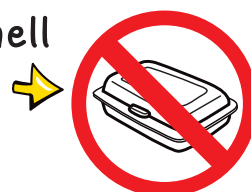
Plastic that we **CAN** recycle:

- Plastic bottles
- Plastic trays / tubs (not ♻️)
- Plastic bags
- Plastic buckets
- Foam / polystyrene packaging



Plastic that we **CANNOT** recycle:

- Chip packets
- Sweet wrappers
- Washing powder bags
- Sauce sachets
- Dirty clamshell packaging





Tips for collecting PLASTIC

There are many different types of plastic.

Each one is represented by a special code inside a small triangle. You will find number 1, 2, 3, 4, 5, 6 or 7.



Soft drink, juice and water bottles.



Common white or coloured plastic, like milk bottles and shampoo/detergent containers.



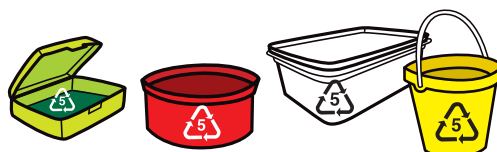
Hard, rigid, clear, plastic, like water bottles and cordial bottles.



Soft flexible plastic bottles, like squeezable sauce bottles and plastic film products such as bread bags.



Hard but flexible plastic, like ice cream and lunch boxes.



Rigid, brittle plastic, like margarine tubs, yoghurt tubs and foam/polystyrene containers.



Multi-layered packaging such as sauce sachets, soup packets and crisp packets.



PAPER

Paper that we **CAN** recycle:

- ➔ Cardboard of any kind (dry food, cosmetic & medicine boxes, toilet roll cores)
- ➔ Liquid packaging (milk and juice)
- ➔ Office paper



- ➔ Magazines and brochures (including glossy kinds)
- ➔ Newspapers
- ➔ Envelopes



Paper that we **CANNOT** recycle:

- Dirty paper plates
- Wet or dirty paper or cardboard
- Disposable nappies
- Tissues, toilet paper and paper towels
- Dog food bags
- Wax-coated or foil-lined boxes
- Used cement bags
- Carbon paper

CANS

Steel and aluminium cans **MUST** be separated.

PLEASE USE YOUR MAGNET TO CHECK WHICH CANS ARE ALUMINIUM AND WHICH ARE STEEL.

Remember, the magnet will stick to the steel cans. Once you know which is which you must separate them.

Cans that we **CAN** recycle:

ALUMINIUM and STEEL cans:

➔ Beverage cans

➔ Food cans



GLASS

Glass that we **CAN** recycle:

➔ Cool drink, juice and water bottles

➔ Food and sauce bottles and jars

➔ Beer bottles

➔ Wine and alcohol bottles

➔ Clear drinking glasses



Glass that we **CANNOT** recycle:

• Ceramic cups and plates

• Heat-resistant ovenware

• Mirrors and windscreen glass

• Crystal drinking glasses & tumblers



• Window pane glass

• Clay flower pots

• Light bulbs

• Crystal



Recycle Match-up

Circle the items that **CANNOT** be recycled?



SHAMPOO BOTTLES



COOL DRINK CANS



LARGE WATER COOLER BOTTLE



LUNCH BOXES



PLASTIC BAGS



SWEET WRAPPERS



PLASTIC BOTTLES



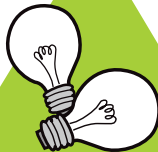
GREEN GLASS



COLOUR GLASS BOTTLES AND JARS



NEWSPAPERS



LIGHT BULBS



PLASTIC BUCKETS

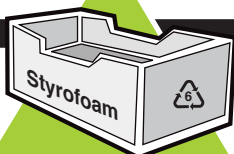


MARGARINE AND YOGHURT TUBS





FOOD CANS



FOAM/
POLYSTYRENE
PACKAGING



CARDBOARD
BOXES



BEER
AND WINE
BOTTLES



ALUMINIUM



BREAD BAGS



AEROSOL
CAN



TOILET ROLL
CORES



CORDIAL BOTTLES



PLASTIC
TUBS



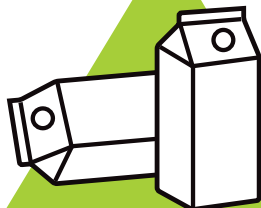
SQUEEZABLE
PLASTIC BOTTLE



GLASS FOOD
CONTAINERS



OFFICE PAPER



MILK and
JUICE CARTONS



JOIN THE PLASTIC RECYCLING REVOLUTION

With so many problems facing the world right now – from climate change to poverty – RECYCLING is one of the differences **EACH ONE OF US** can make every day that can help the planet's future.



BE **ONE** IN A **MILLION**

The Plastic Recycling Revolution is trying to stop plastic damaging our planet and to grow plastic recycling in our country.

WHAT IT MEANS TO **YOU**

This plastic recycling revolution is asking **ALL** South African **LEARNERS** to:

- keep **SOUTH AFRICA** clean and **LITTER FREE**
- start recycling **PLASTIC**

SIGN UP! FOR MORE DETAILS ...



www.millionplusrecyclers.co.za



Join the plastic
recycling revolution
and save the
ENVIRONMENT!

Encourage everyone to stop littering.

No excuses! DO NOT BE A LITTER BUG!

Voice your opinion if you see littering happening.

Improve your school by not littering.

Remember to look for the bins for the litter.

ONE IN A MILLION is going to make a difference!

Now is the time to start!

Make sure you always pick up after yourself.

Everybody needs to join in.

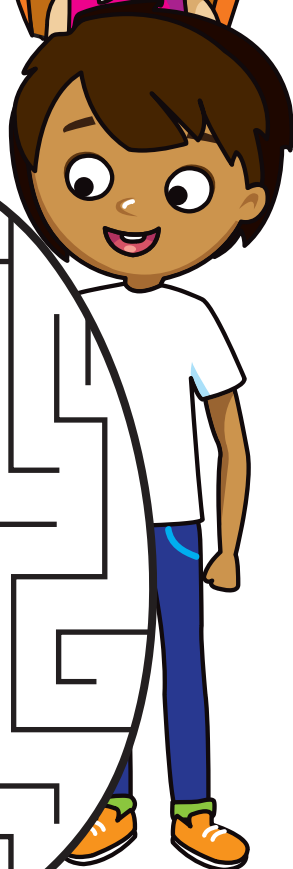
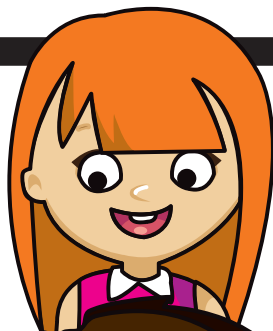
Never go back to littering habits!

Together WE CAN ALL MAKE A DIFFERENCE!



THE PLANET PALS ARE ONE IN A MILLION PLUS

Help them place their plastic into the recycling bin!



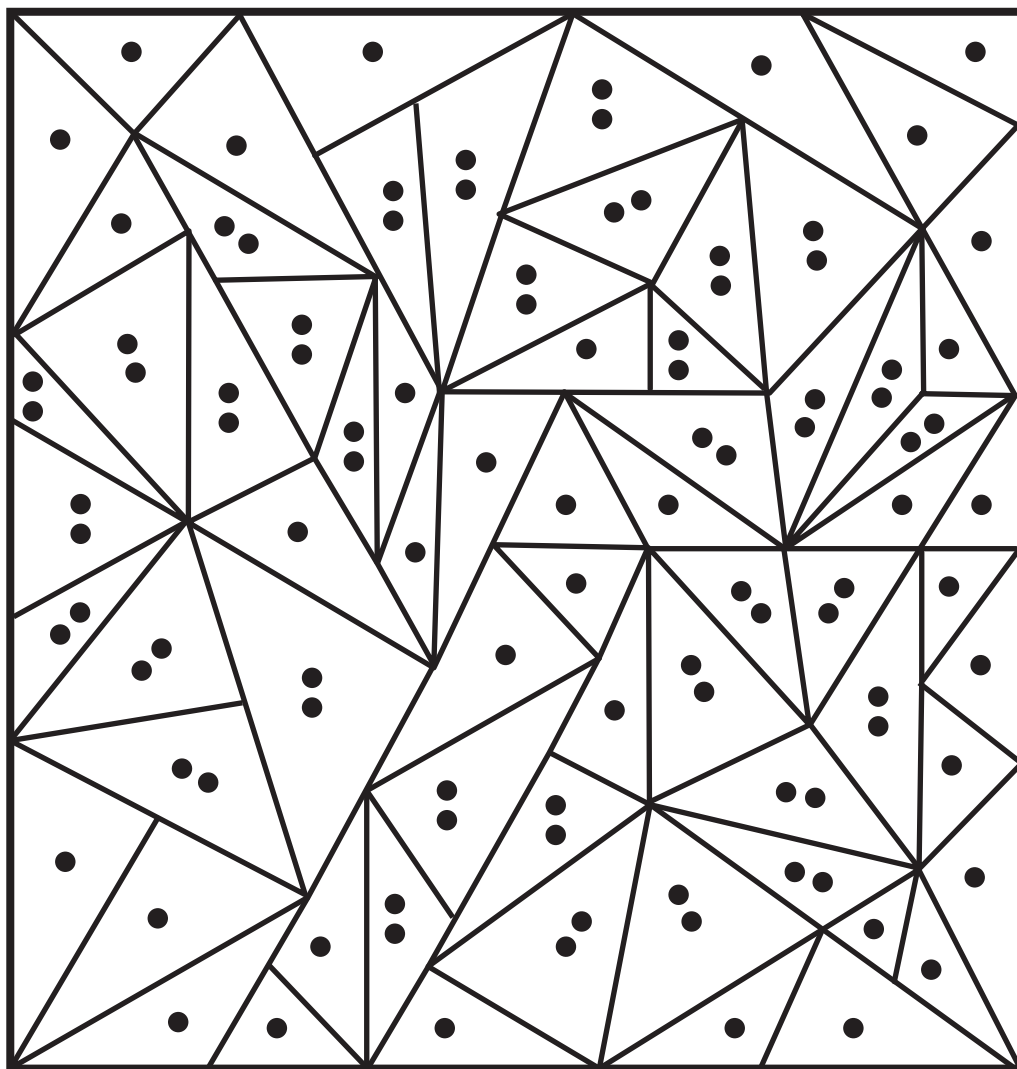


PLANET PALS HAVE JOINED THE RECYCLING REVOLUTION

Colour in the areas and find the hidden symbol.

Colour in the areas with **one dot yellow**.

Colour in the area with **two dots green**.



What does this symbol mean?

.....

QUICK QUIZ

Do the quick quiz below to find out.



Answer
True OR False

- a All plastic plates can be recycled. TRUE FALSE
- b Chip packets can be recycled. TRUE FALSE
- c Everyone should recycle. TRUE FALSE
- d Newspapers with colour pictures cannot be recycled. TRUE FALSE
- e I am too young to participate in a recycling programme. TRUE FALSE
- f Washing powder bags are great for recycling. TRUE FALSE
- g My favourite soda cans cannot be recycled. TRUE FALSE

Do you qualify to be a PLANET PAL and ONE IN A MILLION?



Which is the odd one out?

We should recycle because ...

- a it gives stuff a chance to be re-used
- b it is one way of looking after the planet
- c it reduces litter and pollution
- d it means we care about the planet
- e it uses up more natural resources



Can you earn money from recycling?

YES NO



Do you think metal from cars can be recycled?

YES NO



Glass has to be separated by its colour?

TRUE FALSE

Answers:

1 a False - only clean ones; b False; c True; d False; e False - EVERYONE should recycle; f False; g False
2 e 3 YES 4 Yes
5 True - glass keeps its colour after recycling.



WORDSEARCH

The PLANET PALS want to join the MILLION PLUS CAMPAIGN.
To do this they must find the words in the block below.

K	K	O	K	R	U	B	B	I	S	H	P	W	Y	D
Y	R	F	Y	U	Q	A	L	T	U	D	K	C	I	R
R	E	U	S	E	I	L	B	A	X	T	I	D	G	F
V	X	R	N	E	I	T	D	H	S	T	T	N	E	C
C	L	I	B	F	C	R	S	S	S	C	I	E	T	P
Q	H	I	D	E	E	A	E	A	E	M	S	N	C	K
I	G	N	T	P	R	N	L	J	R	U	I	L	T	C
F	A	O	A	T	E	P	O	A	O	R	A	C	Q	U
L	R	P	O	R	E	R	W	H	P	R	N	E	R	L
P	V	G	A	T	P	R	N	T	U	I	L	P	A	Y
I	C	W	C	N	R	E	O	T	T	C	W	B	W	L
D	A	A	L	N	E	O	A	X	Y	C	O	C	S	T
C	H	A	N	R	F	N	E	C	A	L	R	W	Y	X
X	A	A	G	S	M	Y	E	F	G	D	D	O	S	M
O	F	M	A	T	E	R	I	A	L	E	A	R	T	H

RECYCLE
RUBBISH
PLASTIC
CANS
PAPER
REUSE
TRASH
LITTER
EARTH
PROJECT



NATURAL
FOOTPRINT
MATERIAL
LANDFILL
PROTECT
GLOBAL
GREENHOUSE
WARMING
EXTINCT
AWARENESS

Million 

**I HAVE JOINED
THE REVOLUTION**

**I AM
ONE OF THE
MILLION PLUS**

A Polyco  Initiative
www.millionplusrecyclers.co.za

Booklet sponsored by:

Pick n Pay 
School Club